

CABLE 096 RF: RF CABLE ASSEMBLY, I-PEX MHF + RP SMA JACK S/T PCB MOUNT CABLE TYPE + MULTIPLE CABLE SIZES

SPECIFICATIONS

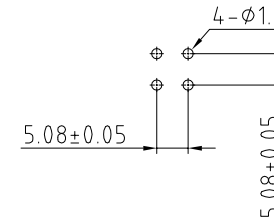
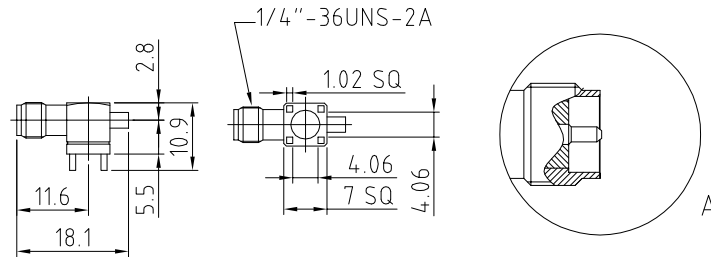
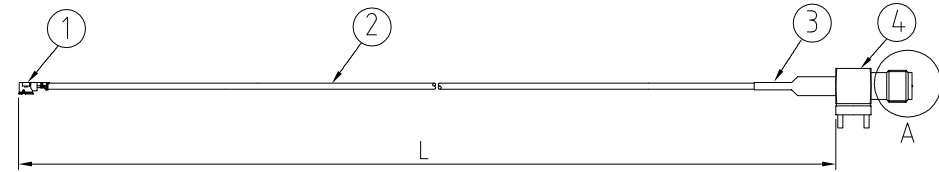
1. I-PEX MHF PLUG (SEE CHART FOR P/N)
2. MIT COAXIAL CABLE (SEE CHART FOR DETAIL)
3. HEATSHRINK, COLOR: BLACK
4. RP SMA JACK S/T PCB MOUNT CABLE TYPE (SEE CHART FOR P/N)

USAGE PRECAUTIONS: CABLES USING 'MICRO' COAX ARE DELICATE:

- (i) HANDLE WITH CARE.
- (ii) DO NOT TWIST; APPLY EXCESSIVE FORCES OR SHARP BENDS TO THE CABLE. DO NOT FORCEFULLY DEFORM WIRES.
- (iii) CONSULT CONNECTOR MANUFACTURER'S DATASHEETS FOR DETAILED NOTES ON HANDLING INSTRUCTIONS.

NOTES:

1. THE ORIENTATION OF CONNECTORS ON DRAWING IS FOR REFERENCE ONLY, IF THE ORDER IS LEFT BLANK THE CONNECTOR WILL NOT HAVE FIXED ORIENTATION.
2. FIXED ORIENTATION IS POSSIBLE FOR CABLE LENGTH 25MM TO 220MM. PLEASE SPECIFY THE FIXED ORIENTATIONS FROM THE ORDER CODE (F1, F2, ETC)
3. CONTACT GRAD CONN IF THE ORIENTATION YOU REQUIRE IS NOT SHOWN.
4. WORKING FREQUENCY RANGE: DC-6GHz

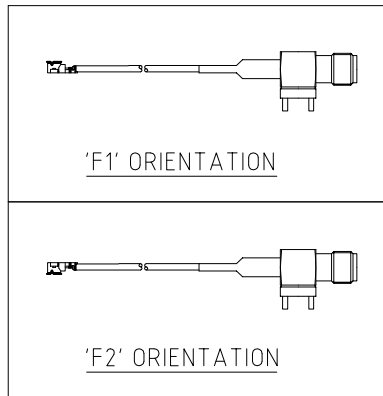


SMA JACK DETAIL DIMENSION

RECOMMENDED PC BOARD LAYOUT

CHART OF CABLE AND CONNECTOR P/N

CABLE Ø & COLOR	I-PEX P/N	SMA P/N
Ø1.13, GRAY	20278-112R-13	RFCT-SMA015-F13
Ø0.81, GRAY	20311-001R-08	RFCT-SMA015-F08
Ø1.32, GRAY	20278-112R-32	RFCT-SMA015-F32
Ø1.37, BLACK	20351-112R-37	RFCT-SMA015-F37
RG178, BROWN	20278-112R-18	RFCT-SMA015-F78
Ø1.32DS, BLACK	20278-112R-32	RFCT-SMA015-F78



HOW TO ORDER
CABLE 096 RF - X X X - X X - X

"L" LENGTH IN MM
eg: 100MM = 0100
(MIN. 025-MAX.400)
STANDARD = 100, 150, 200)
Tolerance: <50mm: ±2mm.
51-200mm: ±5mm.
201-400mm: ±7mm.

CABLE SIZE OPTIONS:

- 0 = Ø1.13MM CABLE
- 1 = Ø0.81MM CABLE
- 2 = Ø1.32MM CABLE
- 3 = Ø1.37MM CABLE
- 4 = RG178 CABLE
- 5 = Ø1.13MM LOW LOSS CABLE
- 6 = Ø1.32MM DOUBLE SHIELDING CABLE

BLANK = DOES NOT HAVE A FIXED ORIENTATION
F1 = I-PEX CONNECTION UP (L=25-220MM)
F2 = I-PEX CONNECTION DOWN (L=25-220MM)
(SEE NOTES 1, 2, 3 AND DIAGRAMS FOR MORE INFORMATION)

10 09/03/10 - NYW RELEASE
11 16/03/10 - NYW CHANGE RG178 CABLE COLOR.
12 18/05/10 - NYW AMEND SMA DESCRIPTION TO S/T TYPE.
13 27/09/10 - NYW AMEND IPEX P/N FOR 081 CABLE.
14 18/09/13 - NYW AMEND IPEX P/N FOR RG178 CABLE.
15 ADD CABLE OPTION 5.
16 18/07/18 - NYW ADD CABLE OPTION 6.
17 13/08/20 - NYW UPDATE SMA P/N'S.

Scale: NTS	THIRD ANGLE	Unstated X .XX .XXX ANGLES	Tolerances: N/A N/A N/A N/A	Material SEE NOTE
Drawn: NYW				
App'd: XXX	Title CABLE ASSEMBLY	NOT TO SCALE		
Date: 13 AUG. '20	Revision: 1.7	Unit: mm		

www.gradconn.com

THIS DRAWING IS CONFIDENTIAL AND MUST NOT BE COPIED OR DISCLOSED WITHOUT WRITTEN CONSENT

Type: Cable 096 RF
CABLE 096 RF
Drawing Number:
Sheet 1 of 1
Drawing © E and O E